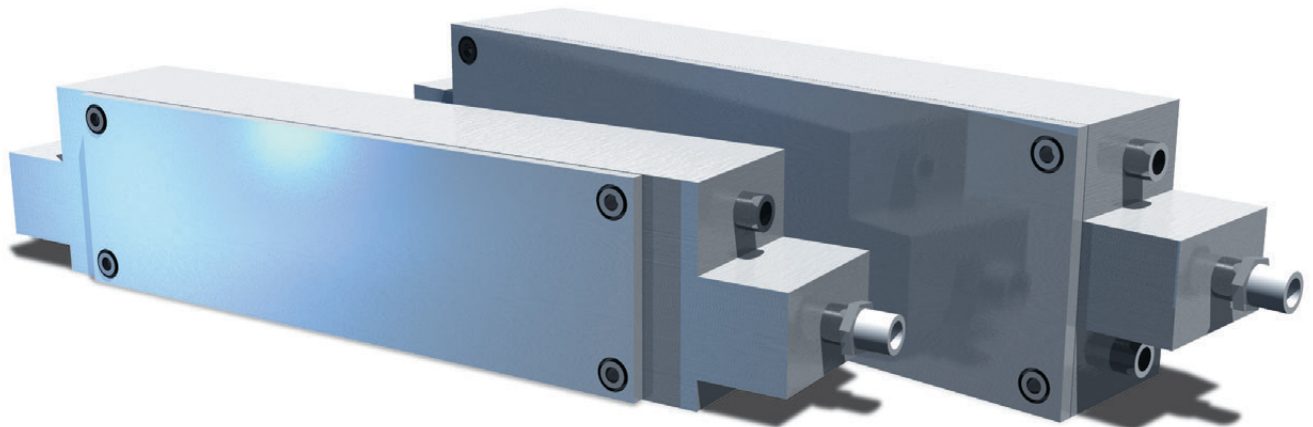


HIGH EFFICIENCY DIFFUSE PUMP CHAMBERS

Lasers

Laser Components

Laser Optics



LOTIS HQ Series pump chambers are designed for use with Nd: YAG active elements in Q-Switched and Free Running operation. Double Rod chambers (HQD) allow pumping two active elements simultaneously by the single flash lamp.

Close diffuse reflector design provides uniform rod pumping and allows to extract high energy due

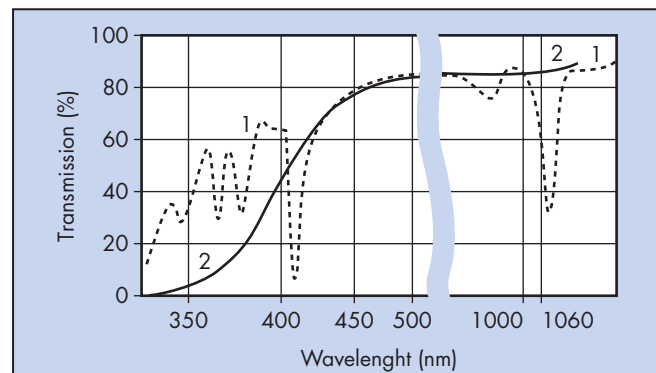
to elimination ASE (amplified spontaneous emission).

Specialized filters are available for optimum energy transfer and UV absorption.

Chemically inert materials assure contaminate free operation and maximum useful life.

SPECTRAL TRANSMISSION OF THE REFLECTOR MATERIALS L=2 MM:

1. Sm-doped glass;
2. Eu-doped fused silica



SPECIFICATIONS

Model	(Size/Quantity)	Lamp Size (Bore x Arc Length)
HQ 4x80	4x80/1 pc	5x75
HQ 5x80	5x80/1 pc	5x75
HQ 6.3x80	6.3x80/1 pc	5x75
HQ 8x80	8x80/1 pc	5x75
HQD 4x80	4x80/2 pcs	5x75
HQD 5x80	5x80/2 pcs	5x75
HQD 6.3x80	6.3x80/2 pcs	5x75
HQD 6.3-8x80	6.3x80/1 pc 8x80/1 pc	5x75
HQ 6.3x100	6.3x100/1 pc	5x90
HQ 8x100	8x100/1 pc	5x90

Chamber's design can be changed on customer's request.